

# Exceed your expectations with Samsung's DigitAll *Agility*.



Standard Duplex



Digital Duplex Copier  
High Quality Laser Printer  
Smart Colour **Scanner**  
Intelligent High-Speed Fax

DigitAll *Agility* Digital Laser Copier with Enhanced Multi-Function Capabilities

## SAMSUNG SCX-6220/6320F

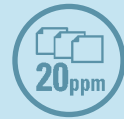
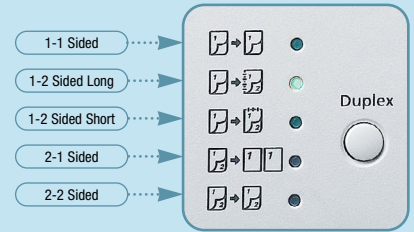
SAMSUNG

The SAMSUNG SCX-6220/6320F  
 Dream in Digital Duplex for an Agile Edge

## Digital Duplex Copier

### Standard DADF (Duplex Automatic Document Feeder)

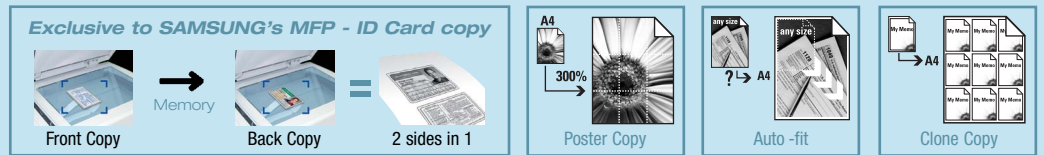
creates professional duplex (2-sided) documents in 4 copy formats including 1:1, 1:2, 2:1, 2:2 with simple one-touch buttons, saving on paper or additional equipment costs.



**20 pages (A4)/min.** The fastest copy speed in its class will make short work of your volume documents.

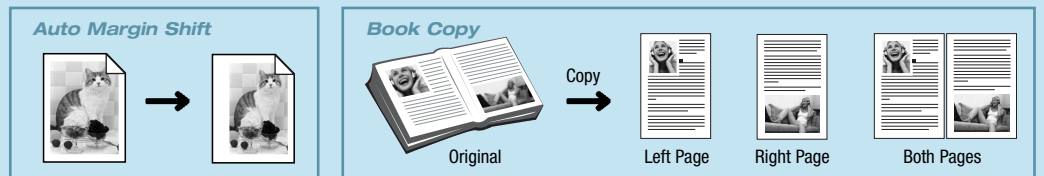
### Special Copy Editing

The high-tech digital core of the SCX-6220/6320F adds a finishing touch to your document creation with various editing functions like Clone, Auto-fit, 2-up, Poster and ID Card copy in addition to other essentials like 25%~400% Zoom-copy or a 999 page Multi-copy.



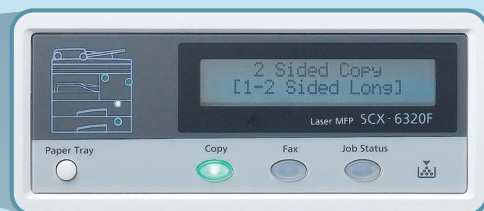
### Auto Margin Shift & Book Copy

Create a binding edge for the document by shifting the image horizontally or vertically. Then copy an entire book by using Book Copy options like Left Page, Right Page or Both Pages.



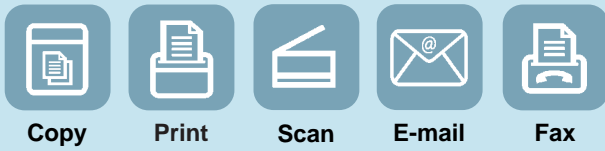
### High Volume Paper Capacity

the standard 550-sheet paper tray, 100-sheet multi purpose tray and optional 550-sheet additional tray, mean you can copy more with less reloading, saving you time and effort.



### Easy Operation

The intuitively designed operation panel has ergonomic one-touch buttons, a clear LCD display and an Error Indicator for instant job status checking and more direct control.



# Powerful Standards with Remarkable Expandability



Network Kit  
Adjustability

Options for Print Management



Expandable  
Paper Capacity



E-mail



- One-Touch Dial (standard)
- Direct Scan-to-E-mail (optional)

The SAMSUNG SCX-6220/6320F

# Exceed your expectations with Samsung's DigitAll *Agility*.

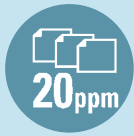
Agility takes a combination of physical speed, mental quickness, skill and intelligence, and the SCX-6220/6320F delivers it all to you in Duplex Printing with Copy & Networking capabilities for the creation and sharing of documents that is so important to your business communication. Eye-opening digital functions for copying or printing multi-page documents, scanning images to share, and faxing or emailing with greater ease provide you with the DigitAll Agility to succeed.

Communicate the Samsung way with the enhanced multi-functional laser copier, the SCX-6220/6320F.



## ***DADF Standard***

Simple duplex printouts using a full duplex document feeder



## ***Speed upon Quality***

Up to 20 pages/min (A4) copy & print speed with high quality output

Super G3 fax capability with a 33.6Kbps modem and duplex technology (SCX-6320F)



## ***Large Paper Capacity***

650 sheets standard with an optional 550-sheet additional tray



## ***Professional documents***

Special edit copy functions and various printout formats allow for more professional looking documents.



## ***Network Adjustability***

Scan direct to e-mail with the standard QWERTY keyboard and simple network connection allows network printing.



## ***Economic Features***

One-touch 40% toner saving button,  
save paper with easy duplex copy & printing,  
2-piece consumables



## ***Easy User Interface***

Intuitive operational panel design with one-touch buttons  
for effortless operation

**STANDARD  
Duplex**



DigitAll *Agility* Proving itself with performance and expandability.  
**The SAMSUNG SCX-6220/6320F**



## High Quality Laser Printer

### Printouts

The superb output of up to 1,200 dpi will sharpen up your appearance as well with outstanding image quality.



### 20 pages/min. (A4)

With a fast printout speed and a high speed USB 2.0 interface you'll never have to wait long.



### Professional Layouts

Printing in various layouts from the menu tab like Multiple Pages per Side, Scaling, Fit to Page, Poster, Duplex Printing, Booklet Printing, Watermark and Overlay will allow you to create with professional flair.

**Multiple Pages per Side**

**Booklet Printing**

**Duplex (2-sided) Printing**

Long Edge      Short Edge

**Scaling**

**Watermark and Overlay**

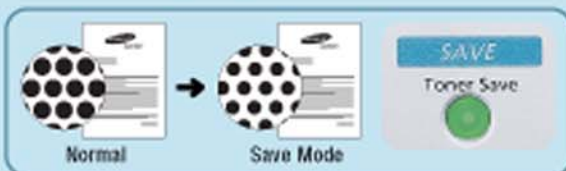
### Network Printing

The advanced capabilities of the SCX-6220/6320F can be shared over a network when the optional network kit is installed for easy document management to meet the needs of a small workgroup.



### Toner Save Button for a 40% Savings

Just push the one-touch button to reduce toner consumption up to 40% while still getting high quality printouts in a slightly lighter tone.



### Economic 2-piece Consumables

Allow you to maximize the use of the 20,000 page yield drum unit by replacing the 8,000 page yield toner cartridge separately, thereby extending the drum's usability.



Drum Unit - 20,000 pages yield (at 5% coverage)



Toner Cartridge - 8,000 pages yield (at 5% coverage)

## Smart Colour Scanner

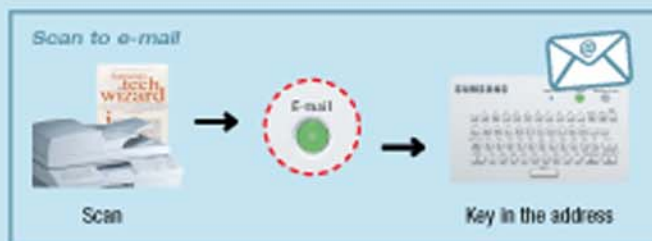
### High Level Colour Scan

The 256-level gray scale colour scanner creates business quality images with up to 4,800 x 4,800 dpi enhanced resolution to complete your professional appearance.



### Direct Scan to E-mail

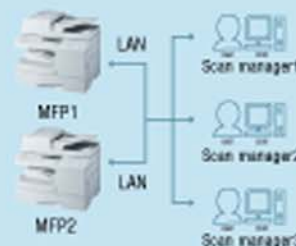
The standard QWERTY keyboard on the SCX-6320F and optional network kit enable instant transferring of scanned images by e-mail. Just press the Scan to E-mail button and key in the recipient's e-mail address right on the front panel's keyboard to send your scanned data instantly.



- Not all file formats are supported for this function
- Available when e-mailing on an SMTP server
- Optional QWERTY keyboard available for the SCX-6220

### Scan to Folder on N/W

If the SCX-6220/6320F is networked, your scanned data can be saved directly into folders on the network computers.



### Scan to get texts

OCR (Optical Character Recognition) software allows users to easily create editable text documents from scans. Simply scan documents to your SCX-6220/6320F for more advanced and convenient methods of document management.



## Intelligent Speed Fax (SCX-6320F)

### Advanced G3 Fax with Duplex Technology

Built-in Duplex Technology enables sending 2-sided documents or printing incoming faxes on both sides at a high rate (about 3 seconds per page) with a 33.6kbps modem.



### 16MB Fax Memory

Don't worry about document loss from running out of paper, as the expanded memory of the SCX-6220/6320F can retain up to 1,280 pages (at ITU-T #1 Chart) of documents in the fax memory for secure sending.



### Convenient Auto Dial

Send faxes without wasting time entering numbers. Up to 40 numbers can be stored for 1-touch faxing as well as 200 speed dial numbers.



### Fax Forwarding

The SCX-6220/6320F can forward incoming faxes to a dedicated fax number or e-mail automatically when networked. With this automatic forwarding function, you won't be stuck waiting by the fax machine.



• Available when optional network kit is installed

# Make the intelligent choice for simplicity itself with the Multi-function SCX-6220/6320F



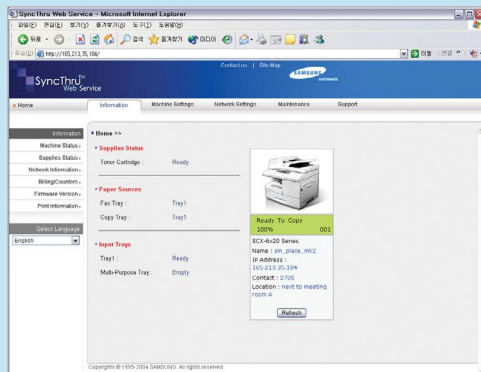
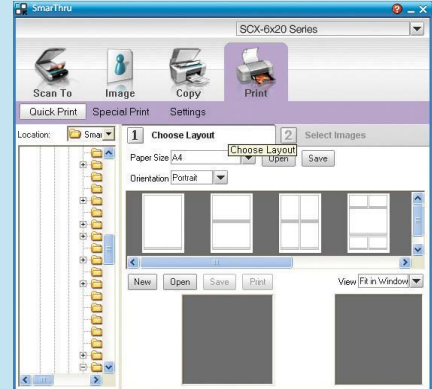
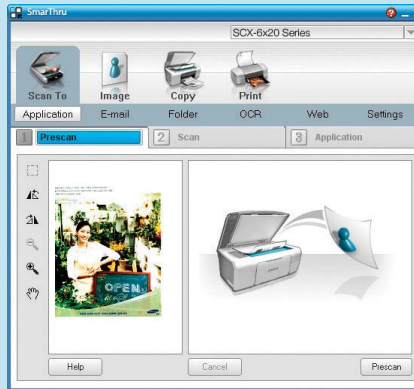
**SmarThru4™**, the accompanying document handling software will let you edit scanned images, save them in various formats, and set up a variety of copy/print formats – one click at a time.

**Scan To** Simply scan an image to save it in an application or folder, email it, or publish it on a web site.

**Image** Edit an image you have saved as a graphic file and send it to a selected application or folder, email it, or publish it on a web site.

**Copy** Produce professional quality copies. You can create black and white or color copies of an image (if supported) and easily customize the copy settings.


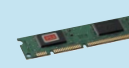
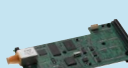




**Print** Print images you have saved in black and white or color (if supported) and easily customize the print settings.



**SyncThru™ Web Service** is a TCP/IP and HTTP protocol enabled, embedded web server available on connected machines. This Internet Service allows administrators to configure advanced setting and users to obtain the status of the machine from their desktop.

## Extension of multi-functions for additional performance

A variety of customer and technician-adjustable options will multiply the multifunctional performance of the SCX-6220/6320F.

		SCX-6220	SCX-6320F
Functions	Standard	Local Print/Scan/Copy/DADF	Local Print/Scan/Copy/Fax/ DADF
	Optional Functions	<ul style="list-style-type: none"> <li>• Network Print</li> <li>• Network Scan (Scan to Folder)</li> </ul>	<ul style="list-style-type: none"> <li>• Scan-to-Email</li> </ul>
Options	Customer Installable	 • Second Paper Tray (550 sheets)	 • PostScript3 (Clone)
		 N/W Card	 DIMM for Scan-to-Email
		 QWERTY Key Board	<ul style="list-style-type: none"> <li>• Network Kit</li> <li>- Internal N/W Card</li> <li>- DIMM for Scan-to-Email</li> <li>- QWERTY keyboard</li> </ul>
	Technician Installable	 • Mechanical Counter	 • Foreign Device Interface

# SAMSUNG SCX-6220/6320F

		<b>SCX-6220</b>	<b>SCX-6320F</b>
Copy	Speed *	Up to 20 ppm in A4 (22 ppm in Letter)	Up to 20 ppm in A4 (22 ppm in Letter)
	Resolution (Optical)	600 x 600 dpi	600 x 600 dpi
Print	Text, Text/Photo mode	: 600 x 300 dpi	: 600 x 300 dpi
	Photo mode	: 600 x 600 dpi (Platen), 600 x 600 dpi (ADF)	: 600 x 600 dpi (Platen), 600 x 600 dpi (ADF)
	First Copy Out Time	8 seconds (from Standby mode)	8 seconds (from Standby mode)
	Zoom Rate	25-400% (platen), 25-100% (ADF)	25-400% (platen), 25-100% (ADF)
	Multi Copy	1-999 pages	1-999 pages
	Duplex Copy	Standard (1:1, 1:2, 2:1, 2:2)	Standard (1:1, 1:2, 2:1, 2:2)
	Method	Laser Beam Printing	Laser Beam Printing
	Speed **	Up to 20 ppm in A4 (22 ppm in Letter)	Up to 20 ppm in A4 (22 ppm in Letter)
	Resolution	Up to 1200 dpi Effective Output	Up to 1200 dpi Effective Output
	First Print Out Time	9 seconds (from Standby mode)	9 seconds (from Standby mode)
Scan	Emulation	PCL6	PCL6
	Duplex Print	Standard	Standard
	Compatibility	Twain standard, WIA standard	Twain standard, WIA standard
	Method	Color CCD	Color CCD
	Resolution(Optical)	600 x 600 dpi	600 x 600 dpi
	Resolution(Enhanced)	Max. 4,800 x 4,800 dpi	Max. 4,800 x 4,800 dpi
	Effective Scan Length	Platen: 297 mm (11.7"), ADF : 356 mm(14.0")	Platen: 297 mm (11.7"), ADF : 356 mm(14.0")
	Effective Scan Width	208 mm (8.2")	208 mm (8.2")
	Color Bit depth	Internal : 36 bit, External : 24 bit	Internal : 36 bit, External : 24 bit
	B/W Bit depth	1 bit for Text mode, 8 bit for Gray mode	1 bit for Text mode, 8 bit for Gray mode
FAX	Gray Scale	256 Levels	256 Levels
	Compatibility	-	ITU-T Group 3, ECM
	Applicable line	-	Public Switched Telephone Network (PSTN) or behind PABX
	Modem Speed	-	33.6 Kbps
	Transmission Speed ***	-	Approx. 3 seconds per page
	Compression Mode	-	MH / MR / MMR (ECM Mode) / JBIG / JPEG
	Scan Speed ****	-	Platen: Approx. 1.4 seconds per page / ADF : Approx. 1.5 seconds per page
	Resolution	-	Max. 400 x 400 dpi Standard : 203 x 98 dpi Fine : 203 x 196 dpi Super Fine : 203 x 392 dpi, 300 x 300 dpi, 400 x 400 dpi
	Memory	-	Photo : 203 x 196 dpi Color : 200 x 200 dpi 16 MB (Approx. 1,280 pages at ITU-T #1 Chart)
	Auto Dial	-	1-touch dial : 40 Locations Speed dial : 200 Locations
Paper Handling	Colour Fax	-	Yes(Send only)
	Duplex Send	-	Yes
	Duplex Receive	-	Yes
	Input Capacity and Types	550-sheet Cassette Tray (75 g/m <sup>2</sup> , 20 lbs), 100-sheet MP Tray	550-sheet Cassette Tray (75 g/m <sup>2</sup> , 20 lbs), 100-sheet MP Tray
	Output Capacity and Types	250-sheet Face Down	250-sheet Face Down
	Media Size (for Print)	Tray: A4,Letter,Legal, Folio Manual Tray: A4, Letter, Legal, Folio, Executive, Envelope6 3/4, 7 3/4,#9, #10,DL,C5,B5	Tray: A4,Letter,Legal, Folio Manual Tray: A4, Letter, Legal, Folio, Executive, Envelope6 3/4, 7 3/4,#9, #10,DL,C5,B5
	Media Size (for Fax and Copy)	Letter, A4, Legal	Letter, A4, Legal
	Media type	Tray : Plain Paper Manual Tray : Plain Paper, Transparency, Label, Post Card, Envelope	Tray : Plain Paper Manual Tray : Plain Paper, Transparency, Label, Post Card, Envelope
	DADF Capacity	50-sheets (Letter / A4, 20 lb / 75 g/m <sup>2</sup> )	50-sheets (Letter / A4, 20 lb / 75 g/m <sup>2</sup> )
	DADF Document Size	Width: 174 ~ 216mm (6.9"-8.5") Length : 128 ~ 356mm (5" ~ 14.0") for Single page scan 128 ~ 400mm (5" ~ 15.7") for Multi pages scan	Width: 174 ~ 216mm (6.9"-8.5") Length : 128 ~ 356mm (5" ~ 14.0") for Single page scan 128 ~ 400mm (5" ~ 15.7") for Multi pages scan
General	Net Dimension (W x D x H)	540 x 441 x 488mm (21.3 x 17.4 x 19.2 inch)	540 x 441 x 488mm (21.3 x 17.4 x 19.2 inch)
	Weight with Consumables	24.6 Kg (54.1 lbs)	24.6 Kg (54.1 lbs)
	Packing Weight	32 Kg (70.4 lbs)	32 Kg (70.4 lbs)
	LCD	2 line x 20 characters (Backlite)	2 line x 20 characters (Backlite)
	Interface	USB 2.0 (High Speed), IEEE 1284, Internal Ethernet 10/100 base Tx	USB 2.0 (High Speed), IEEE 1284, Internal Ethernet 10/100 base Tx
	System Memory	32MB	48MB
	OS Compatibility *****	Windows 95/98/Me/NT4.0/2000/XP, Various Linux OS (via USB interface only) including Red Hat, Caldera, Mandrake, Slackware, SuSE and Turbo Linux	Windows 95/98/Me/NT4.0/2000/XP, Various Linux OS (via USB interface only) including Red Hat, Caldera, Mandrake, Slackware, SuSE and Turbo Linux
	Warm-up Time	Less than 25 seconds (from sleep mode)	Less than 25 seconds (from sleep mode)
	Noise *****	Warm up : Less than 48 dBA / Stand by : Less than 40 dBA Printing : Less than 60 dBA	Warm up : Less than 48 dBA / Stand by : Less than 40 dBA Printing : Less than 60 dBA
	Power Requirement	100 ~ 127 VAC, 50/60 Hz, 6A 220 ~ 240 VAC, 50/60 Hz, 3A	100 ~ 127 VAC, 50/60 Hz, 6A 220 ~ 240 VAC, 50/60 Hz, 3A
Power Consumption	Sleep Mode	: 35 W (Energy Star Compliant)	: 35 W (Energy Star Compliant)
	Standby Mode	: 115W	: 115W
	Average	: 430 W	: 430 W
Operating Conditions	Temperature	: 10 °C ~ 32 °C (50 °F ~ 89 °F)	: 10 °C ~ 32 °C (50 °F ~ 89 °F)
	Humidity	: 20 % ~ 80 % RH	: 20 % ~ 80 % RH
Consumables	Type	2-Piece Cartridge	2-Piece Cartridge
	Yield	Standard Toner: 8,000 pages at ISO 19752 5% Coverage Drum : 20,000 pages at 5% coverage***** (Ships with standard 8,000 pages toner and 20,000 page Drum)	Standard Toner: 8,000 pages at ISO 19752 5% Coverage Drum : 20,000 pages at 5% coverage***** (Ships with standard 8,000 pages toner and 20,000 page Drum)
Options	Code	Toner : SCX-6320D8 Drum : SCX-6320R2	Toner : SCX-6320D8 Drum : SCX-6320R2
	Network	Network Kit(SCX-6320NA) - Internal network card - DIMM for Scan-to-Email - QWERTY keyboard Ethernet 10/100 Base TX + 802.11b Wireless LAN (External, ML-00LA)	Network Kit(SCX-6320NA) - Internal network card - DIMM for Scan-to-Email - QWERTY keyboard Ethernet 10/100 Base TX + 802.11b Wireless LAN (External, ML-00LA)
	Paper Cassette	1EA x 550-sheet Cassette Tray(SCX-6320S5)	1EA x 550-sheet Cassette Tray(SCX-6320S5)
	Emulation	PostScript3 Clone DIMM (SCX-6320PA)	PostScript3 Clone DIMM (SCX-6320PA)
	Mechanical Counter	Mechanical Counter(SCX-6320X1)	Mechanical Counter(SCX-6320X1)
	F D I	Foreign Device Interface Kit (SCX-6320X2)	Foreign Device Interface Kit (SCX-6320X2)
	Desk	Desk (SCX-6320G5)	Desk (SCX-6320G5)

\* Copy Speed is based on Single Document Multiple Copy.

\*\* Print speed will be affected by operating system used, computing performance, application software, connecting method, media type, media size and job complexity.

\*\*\* Condition: Standard resolution, MMR(JBIG), Maximum modem speed, Phase"C" by ITU-T No.1 Chart, Memory Tx, ECM

\*\*\*\* Condition: ITU-T No.1 Chart, Standard Resolution

\*\*\*\*\* Sound Pressure Level, ISO7779

\*\*\*\*\* May be affected by operating environment, printing interval, media type and media size

Distributed by



Smythe Business Machines

**SAMSUNG DIGITall**  
everyone's invited™

www.samsungprinter.com