

SAMSUNG



# DigitAll *biz-partner*

Versatile digital  
functions



Economic &  
easy-to-use

SF-560 & SF-565P

The new MFPs SF-560 & SF-565P

SAMSUNG DIGIT*all*  
everyone's invited™  
[www.samsungprinter.com](http://www.samsungprinter.com)

We've got you covered with the new Samsung SF-560 and SF-565P's total biz solution. Make Samsung's SF-560 or SF-565P your partner and we'll show you how a multi-function digital laser fax, copier, printer & scanner can communicate with your work environment to help you and your work go faster, whether it's a place of business or your own home office.



**SUPER  
G3 FAX**



**LASER  
COPIER**



**LASER  
PRINTER  
(SF-565P only)**



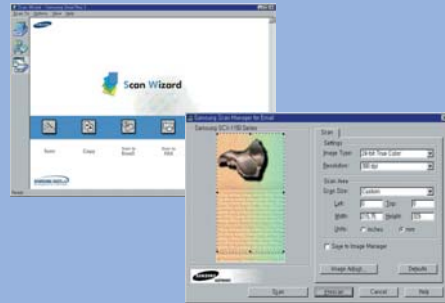
**SCANNER  
(SF-565P only)**

## Powerful Performance

Upgrade your work performance to the high-speed crisp image quality of the Samsung SF-560 & SF-565P laser MFPs.

- The Need for Speed Fax : With a quick 33.6 Kbps fax TX our contribution to your speed will be significant and the 2 MB of memory stores up to 160 pages of information
- Copy Capacity for Quickness : Samsung sets the pace with a remarkably fast copy speed at up to 16 pages / minute (A4) and greater paper capacity with a convenient 250-sheet cassette.
- Crisp and Confident Printing : The fastest laser print speed in its class, up to 16 pages / minute (A4) produces crisp, clear 600 x 600dpi laser images. (SF-565P only)
- Scan Speed & Scale : Approx. 6 second quick scanning and elaborate 256 level gray-scale make your productions unparalleled. (SF-565P only)

- SmarThru™ : Easy document handling software with which the scanned images can directly be sent by email, fax or converted into electronic document or HTML with just one simple click. (SF-565P only)



- Fax Dials and Battery Back-up : 20 one-touch / 80 speed dials just save you time and the 92 hour battery back-up secure your documents in case of a power failure.
- Easy Operation Panel : Make your work a breeze when you discover how easily you can handle your task with simple one-touch buttons or the clear LCD display to check its status.

## The Ease of Everything

The Samsung high-tech contribution makes your SF-560 or SF-565P biz-partner easier to operate with features to better your business.

- Advanced Printing : Various editing functions like Multiple Pages per Side, Fit to Page, Poster, Watermark & Overlay will make your business documentation more professional. (SF-565P only)
- Zoom Copy & ADF : A wide zoom range of 50 ~ 150% makes your copy fit to your needs. Multi-page documents can be quickly & easily copied without handling, with the ADF (Auto document feeder) and collation features.

## Economical Features

The SF-560 and SF-565P are not only competitively priced, they also have built-in features to save you money.

- Toner Save Button : Allows you to save your toner up to 40 % so you can replace cartridges less frequently and save your money.
- Toll Save Button : Programme your machine to send your faxes after peak day-time call rates go down for the evening.
- Paper Saving : Combine two or four originals on one page.

## Refined & Robust Design

The SF-560 and SF-565P were designed with superior technology inside and insightful consideration for ease of use for business in the real world.

- Space-illuminating style : The refined two tone colour design white & grey brightens up any work place,

**Versatile Digital Functions :**  
Laser Fax / Copier / Printer and Scanner  
(Printer & Scanner for SF-565P)



**SF-560 / SF-565P**

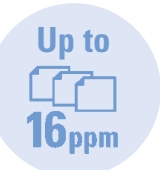
### Advanced Functions

- Fax : Fax Forward, Secure Fax
- Copy : Up to 99 page Multi-copy, Zoom copy, Collation
- Print : Various printing layouts for professional documents
- Scan : 256 level grey-scale



**SAVE  
BUTTON**

**Cost Saving :**  
Easy one-touch buttons for toner and toll savings.



**Fast Print / Copy Speed (A4) :**  
The fastest 16 pages / minute in its class.

**Fax Speed & Capability :**  
Quick 33.6 Kbps Fax modem and 2 MB memory to store up to 160 pages.

**Space-illuminating style :**  
Robust yet refined in shape in a fresh white tone. Compact to fit any home or small office.



**Great Paper Capacity :**  
The largest paper capacity in its class.



**Easy Operational Panel :**  
One-touch buttons for advanced functions and a clear LCD display for easy status checking.

whilst freeing up your valuable desk space with its compact size.

- Effortless : No more fuss. Toner & paper replacement couldn't be easier with easy front-out access panels.

The SF-560 and SF-565P digital MFPs from Samsung will keep you and your business up to speed. Your **DigitAll biz-partner** is equipped to help you make it with its multi-functional solution.

Design and Specifications are subject to change without notice. Trademarks of other companies mentioned in these publications are hereby recognized and acknowledged.

**SF-560**

**SF-565P**

<b>FAX</b>	Compatibility	ITU-T Group 3, ECM	ITU-T Group 3, ECM
	Applicable line	Public Switched Telephone Network (PSTN) or behind PABX	Public Switched Telephone Network (PSTN) or behind PABX
	Modem Speed	33.6 Kbps	33.6 Kbps
	Transmission Speed *	Approx. 3 seconds per page	Approx. 3 seconds per page
	Compression Mode	MH / MR / MMR (ECM Mode)	MH / MR / MMR (ECM Mode)
	Scan Speed **	Approx. 6 seconds per page	Approx. 6 seconds per page
	Resolution	Max. 203 x 392 dpi	Max. 203 x 392 dpi
	Memory	2 MB (Approx. 160 pages at ITU-T #1 Chart)	2 MB (Approx. 160 pages at ITU-T #1 Chart)
	Auto Dial	1-touch dial : 20 Locations Speed dial : 80 Locations	1-touch dial : 20 Locations Speed dial : 80 Locations
	<b>COPY</b>	Battery Backup	Max. 92 Hours
Speed ***		Up to 16 ppm in A4 (17 cpm in Letter)	Up to 16 ppm in A4 (17 cpm in Letter)
Resolution (Optical)		200 x 200 dpi	200 x 200 dpi
Resolution (Enhanced)		300 x 300 dpi	300 x 300 dpi
First Copy Out Time		30 seconds (from Stand by mode)	30 seconds (from Stand by mode)
Zoom Rate		50~150%	50~150%
Multi Copy		1~99 pages	1~99 pages
<b>PRINT</b>	Duplex Copy	-	-
	Method	Laser Beam Printing	Laser Beam Printing
	Speed ****	-	Up to 16 ppm in A4 (17 ppm in Letter)
	Resolution	-	600 x 600 dpi
	First Print Out Time	-	12 seconds (from Standby mode)
<b>SCAN</b>	Emulation	-	SPL (Samsung Printer Language)
	Duplex Print	-	Manual
	Compatibility	-	Twain standard
	Method	Mono CIS	Mono CIS
	Resolution(Optical)	200 x 200 dpi	200 x 200 dpi
<b>PAPER HANDLING</b>	Resolution(Enhanced)	-	1200 x 1200 dpi
	Gray Scale	-	256 Levels
	Input Capacity and Types	250-sheet Cassette Tray, 1-sheet Manual Tray	250-sheet Cassette Tray, 1-sheet Manual Tray
	Output Capacity and Types	150-sheet Face Down, 1-sheet Face Up	150-sheet Face Down, 1-sheet Face Up
	Media Size (for Print)	-	76 x 127 mm (3" x 5") ~ 216 x 356 mm (8.5" x 14")
<b>CONSUMABLES</b>	Media Size (for Fax and Copy)	Letter, A4, Legal	Letter, A4, Legal
	ADF Capacity	20 sheets	20 sheets
	Type	Single Cartridge	Single Cartridge
	Yield	3,000 pages at IDC 5% Coverage (Ships with 1,000 pages Starter Toner Cartridge)	3,000 pages at IDC 5% Coverage (Ships with 1,000 pages Starter Toner Cartridge)
	Code	SCX-4216D3	SCX-4216D3
<b>GENERAL</b>	Size (W x D x H) without handset	363.0 x 398.5 x 308.3 mm (14.3" x 15.7" x 12.1")	363.0 x 398.5 x 308.3 mm (14.3" x 15.7" x 12.1")
	Weight (Including Consumables)	9.7 kg (21.3 lbs)	9.7 kg (21.3 lbs)
	LCD	2 lines x 16 characters	2 lines x 16 characters
	System Memory	16 MB	16 MB
	Interface	-	USB 1.1 (Compatible with USB 2.0), IEEE 1284 Parallel
<b>OPTION</b>	OS Compatibility *****	-	Windows 95/98/Me/NT4.0/2000/XP, Various Linux OS (via USB interface only) including Red Hat, Caldera, Mandrake, Slackware, SuSE and Turbo Linux
	Warm-up Time	Less than 35 seconds (from Sleep mode)	Less than 35 seconds (from Sleep mode)
		-	Ethernet 10/100 Base TX(External)

\* Condition: Standard resolution, MMR(JBIG), Maximum modem speed, Phase"C" by ITU-T No.1 Chart, Memory Tx, ECM

\*\* Condition: ITU-T No.1 Chart, Standard Resolution

\*\*\* Copy Speed is based on Single Document Multiple Copy

\*\*\*\* Print speed will be affected by operating system used, computing performance, application software, connecting method, media type, media size and job complexity.

\*\*\*\*\* Please visit [www.samsungprinter.com](http://www.samsungprinter.com) to download the latest software version.

Distributed by

**SAMSUNG DIGITall**  
everyone's invited™