


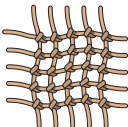



olivetti



d-COLORMF201

MULTI-FUNCTIONAL COLOUR DIGITAL SYSTEM

COLOUR	MULTI-FUNCTION	MODULAR	NETWORK	SAVINGS
				

d-COLORMF201

MULTI-FUNCTIONAL COLOUR DIGITAL SYSTEM



COLOUR FOR EVERYONE

A robust multi-functional colour digital system, for heavy-duty needs and medium-size work groups where corporate image and return on investment are key priorities.

MAIN CHARACTERISTICS

COPIER, PRINTER AND SCANNER	POLYMERISED TONER FOR SUPERIOR PRINTING QUALITY
G3 FAX WITH INTERNET FAX, IP ADDRESS FAX FUNCTIONS*	PCL AND POSTSCRIPT 3 PRINT LANGUAGES
MODULAR ARCHITECTURE	PAPER MANAGEMENT UP TO 3,350 CUT SHEETS (256 g/m ²)

* optional

MODULARITY

The Olivetti d-Color MF201 can be enhanced with a **range of options** to suit individual user needs. The basic configuration, a top performer in its product category, supports the following optional devices: a duplex for front-back printing, a 100-sheet multi-bypass, A3 and A4 paper trays with different capacities, an additional memory board and a 70-sheet document feed.

QUALITY

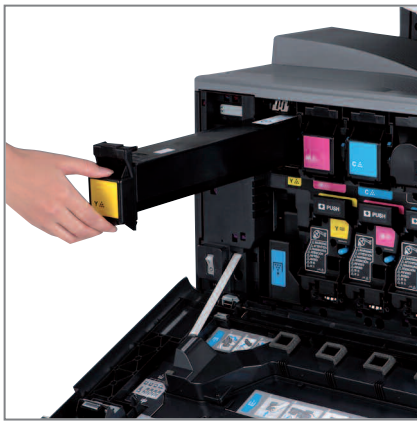
The **innovative polymerised toner**, consisting of minute uniform particles, ensures outstanding printing quality and unbeatable sharpness. The toner's chemical formula delivers fade-resistant print-outs for storage without any loss in brightness, tone and colour contrast.

PRINT CONTROLLER

For **efficient daily operations**, the new-generation print controller integrates all network processes in the Windows, Macintosh, Unix and Citrix environments. All the systems adopt the **same user interface** encompassing all PCL and PostScript languages.

DESIGN

The system can be easily **installed in any office environment**, even on a desk. Ergonomic features include a vertically tilting control panel, easy-grip paper trays and front-facing access to consumables.



POLYMERISED TONER for high-quality printing



200-sheet PAPER TRAY with 2 outlets



Vertically tilting CONTROL PANEL

FAX

The d-Color MF201 offers an **optional fax capability integrated with the corporate intranet or extranet**, for faster, lower-cost transmission.

A **host of functions** are available with the fax option, including digital fax store, internet fax, PC fax (for Windows only) and IP address fax, which keeps down the cost of sending b/w documents by selecting the receiver device's IP address.

SCANNING

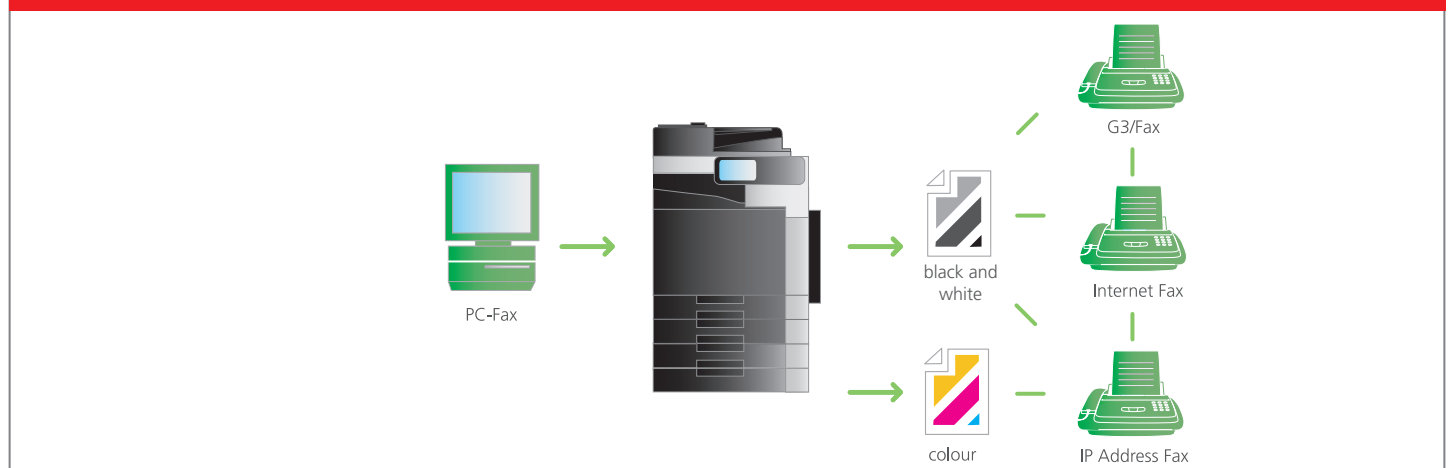
The scanner capability scans documents, converts them into digital data and can also send them to different destinations, in PDF, TIFF and JPEG formats (black and white only), using scan TWAIN, scan-to-SMB, scan-to-mail, scan-to-FTP functions.

To save even more time, the **Multi-Method Send capability** sends documents via fax and e-mail to multiple destinations with a single operation, simultaneously with other transmissions (SMB or FTP).

MULTI-METHOD SEND



FAX





TECHNICAL SPECIFICATIONS

GENERAL	Type desktop/console	Full-Colour desktop	Warm-Up Time	From sub-power switch 37 seconds Black and White 40 seconds Colour	
	Technology	Electrophotographic laser tandem, indirect		Power Consumption	Less than 1.25KW
	CPU	Power PC440EP 667 Hz			Paper Capacity (80 g/m²)
	System Memory	576 MB (1088 MB max)	Automatic document feeder	Max 70 sheets	
	First Copy Time	< 10 seconds in Black and White < 13.5 seconds in Colour		By-pass (opt.)	100 sheets
	System speed	Up to 20 ppm in Colour and Black and White (A4), Up to 9.8 ppm Colour and Black and White (A3)	Paper output capacity		Max 1,200 sheets
	Original format	Max A3		Automatic duplex (opt.)	A5 - A3 wide (64-256 g/m ²)
	Paper size	A3-A5, A3 wide, A6	Dimensions (WxDxH)		620 x 688 x 648 mm
	Paper weight	Universal cassettes: 60-256 g/m ² Multi by-pass tray: 60-256 g/m ²		Weight	Approx. 68 kg
	Greyscale	256 levels			
Power Requirements	220-240V 8A 50/60Hz				
COPIER	Resolution	600 x 600 dpi	Copy features	Chapter and cover mode, proof copy, adjustment test print, glossy mode, colour adjustment digital art, job recall, job setting memory, poster mode, overlay, stamping	
	Multicopy	1-999, interruption mode			
	Zoom	25-400% (0.1 % step)			
PRINTER	Resolution	600 x 600 dpi	Functions	Direct print of PCL, PS, TIFF and PD, overlay, print protection	
	Languages	PCL5e/c, PCL XL 3.0, PostScript 3 (3015)		Operating System	Windows 2000/XP/XP64/Vista, XP/Vistax64 edition
	Interfaces	Ethernet 10-Base-T/100-Base-TX, USB 2.0 compatible			
SCANNER	Type	Colour scanner	Interfaces	Ethernet 10-Base-T/100-Base-TX	
	Scan speed	20 spm in Colour (300 dpi) 40 spm in Black and White (300 dpi)	Protocol	TCP/IP (FTP, SMB, SMTP)	
	Resolution	Max 600 x 600 dpi	Operating System	Windows /2000/XP/Vista, Mac OS 10.2 or later	
	Scan mode	Scan to e-Mail, Scan to FTP, Scan to PC (SMB) Network TWAIN (via Ethernet TCP/IP)	File format	TIFF and PDF standard, JPEG	
			Diver	TWAIN	
FAX	Compatibility	ECM G3	Transmission time	< 3 seconds (A4, V.34, 33.6 kbps, JBIG)	
	Lines	PSTN, PBX	Scan speed	40 spm Black and White (300 dpi)	
	Transmission speed	Up to 33.6 kbps	Memory	Shared with copier	
	Compression methods	MH, MR, MMR, JBIG	Functions	Fax via IP	
	Original format	Max. A3			

Product performances are referred to an appropriate use under optimal conditions. With the right to change technical specifications. The registered trademarks are the property of their respective owners.
d-Color MF201 is distributed by Olivetti S.p.A.
(09/08) - Code: 26733-00